

## RDHS Membership Application

Membership covers the Historical Society, Family History Group and Newsletter, *The Ryde Recorder*

Name:

.....

Address:

.....

.....

Phone (H) .....

(M) .....

Email: .....

Individual @ \$30 per year

Family @ \$40 per year

Pensioner/Student @ \$25 per year

*Ryde Recorder* only @ \$20 per year

Please make cheque/money order payable to *Ryde District Historical Society* and send to:

The Treasurer, Ryde District Historical Society,  
Willandra, 770 Victoria Rd, Ryde NSW 2112

Or by direct transfer to  
Westpac Bank Ryde: BSB 032088, Account  
801289, in the name of Ryde District Historical  
Society **and** send an email with your details to  
rdhs1@bigpond.com

## In the Beginning ...

The Ryde District Historical Society was founded in 1961 by Ryde Rotary with Mr A W "Bill" Stacey as the first president. It is dedicated to collecting and recording the history of the area. With the help of fellow members and the facilities of the archives, we can assist people to research the history of their land, their house, the local area and residents.

A Family History Group was formed in 1988 which helps members with their genealogical studies.

Throughout the year tours are organised to historically significant places and archives and four times a year the Society publishes a newsletter *The Ryde Recorder*.

In 2011 RDHS celebrated 50 years of continuous service.

Projects of historic significance to the Ryde District are undertaken and members can participate.

Past projects include researching significant women of the Ryde District and publishing the information found. Members also collected information on the more than 2,000 residents of the district who served in the First World War. Again, this research was gathered together in a publication – *Ryde Goes to War*.

We are in the process of digitising the collection and appreciate help from interested people. Other projects include cemetery transcriptions and photography at Field of Mars Cemetery, Mapping Ryde, early families of the district and building a continuing database of the streets and houses of the Ryde District.

## Membership Form

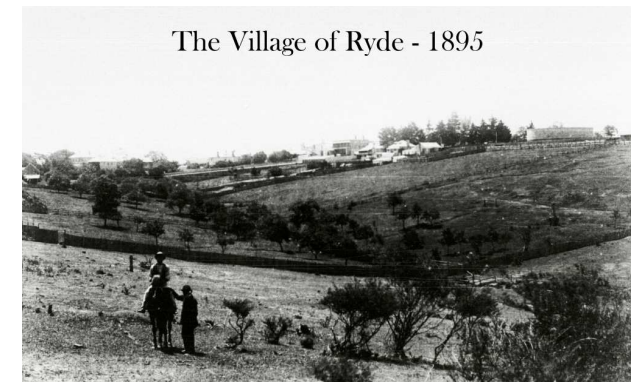
**Ryde District Historical Society Inc  
and Family History Study Group**



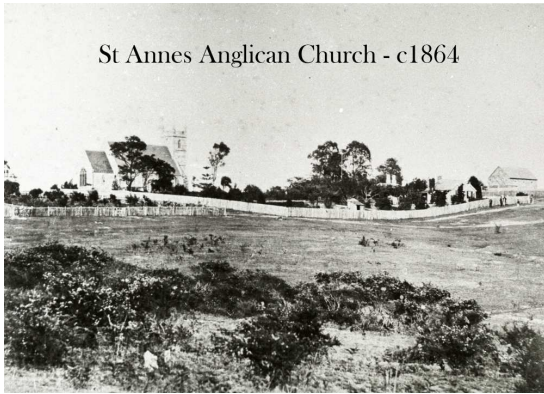
www.rydehistory.org  
rdhs1@bigpond.com  
(02) 9807 7137  
770 Victoria Rd, Ryde 2112

## Early History

Today's Ryde District was originally the home of the Wallumedegal people and was settled by Europeans in the early 1790s, after Sydney and Parramatta. The first land grants, in 1792, were to marines in the Field of Mars area and to emancipated convicts in the district known as Kissing Point. Along with their families, there might have been 20 European residents in the area.

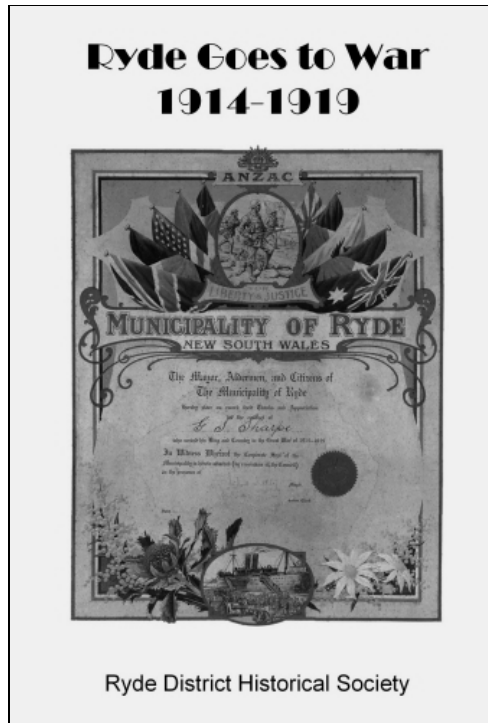


With settlement came churches, cemeteries, schools, shops and eventually bridges which improved transport to and from the area. For years nearly all transport would have been along the rivers or over the rough Kissing Point Road from Parramatta. Reliable steamer services began in the 1830s and Gladesville Bridge linked Ryde to Sydney by road in 1883.



St Annes Anglican Church - c1864

The district was proclaimed at the Municipality of Ryde in 1870. During this period, the Ryde District was an important provider of produce to the burgeoning colony. The area had a vast complex of orchards, market gardens, poultry and flower farms. The coming of the railway in 1886 confirmed the settlement of Ryde and began its conversion from a rural district to one with residential, light industrial and recreation aspects.



Ryde District Historical Society

**Suburbs Included in the Ryde District are:**

- Chatswood West
- Denistone East
- Denistone
- Denistone West
- East Ryde
- Eastwood
- Gladesville
- Macquarie Park
- Marsfield
- Meadowbank
- Melrose Park
- North Ryde
- Putney
- Ryde
- Tennyson Point
- West Ryde



Maria (Granny) Smith  
1799-1870

**What We Offer Our Members**

**Meeting Times**

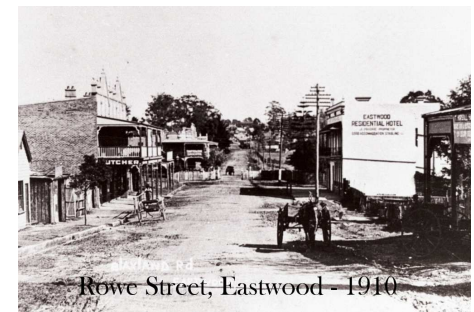
**Historical Society** 2<sup>nd</sup> Tuesday of the month, February to November, 7pm – speakers on local and Australian History.

**Family History Group** 2<sup>nd</sup> Saturday of the month, February to November, 10am – speakers, discussion or excursions of interest to genealogists.

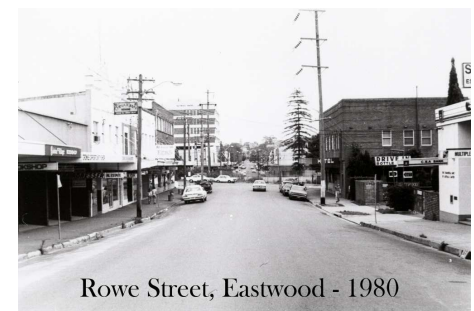
**Library and Archive** 10am to 2pm Fridays, after Family History meetings, or by appointment.

**Tours and Events throughout the year.**

**Help from dedicated and knowledgeable volunteers.**



Rowe Street, Eastwood - 1910



Rowe Street, Eastwood - 1980